



SAS SECURITY PRODUCTS LTD
2024/25

ABOUT US

We understand the life of towing and what is important to you.

A caravan or a motorhome is more than a box on wheels – it is a home, a store of happy memories and a lifestyle. A trailer is more than just a transport device – it is still the most flexible means available to transport bulky items from A to B by yourself. We know the importance of the experiences you build in your caravan or the days you spend with your trailer behind you.

Unfortunately however, in today's world, crime and theft continue to increase. Over 4000 caravans are stolen in the UK each year*, and less than 3% are ever fully recovered**.

Our vision is to bring a stop to caravan and trailer theft with quality, reliable security solutions that deter criminals and prevent crime. We are on a mission to preserve your assets and memories and give you peace of mind.

Nothing speaks of quality, reliability and peace of mind quite like a SAS CLAMP.

In over 37 years of speaking to owners of trailers and caravans, we have developed our solutions to fit your needs, and we are proud of the confidence placed in us by owners, insurers, quality controllers and our distribution network alike.

Join us today and **SECURE YOUR WORLD.**

The SAS Hitchlock saved my caravan. The two other caravans were stolen from the storage site, but they gave up on mine, as they couldn't get the SAS Hitchlock off.

Mr S, Oxfordshire

I am now in receipt of the new SAS defender and it does fit nicely on my van. I would just like to personally thank you and your company with all the kind consideration and out of this world customer service. If only all companies could show and give the support to their customers like you did, then they would have repeat customer base and recommendations to others. Thank you once more.

Mr K, Somerset

* According to AA Caravan Insurance

** According to Club Care Insurance figures

CONTENTS

- New Products - page 04
- Trailer & Caravan Security Guides - page 06
- Product Testing & Approval - page 09

WHEEL SECURITY

- Wheelclamp Selector Guide • Wheelclamps
- Quad Bike Wheelclamp • Locking Wheel Bolts



10 - 23

TOWING HITCH SECURITY

- Hitchlock Selector Guide • Hitchlocks
- Replacement Coupling Locks • Towing Eye Locks



24 - 37

CARAVAN SECURITY

- Leg Locks



38 - 39

VEHICLE SECURITY

- Steering Wheel Locks • King Pin Locks
- Trailer Door Locks



40 - 43

PROPERTY SECURITY

- Security Posts • Garage Defender Locks
- Roller Shutter Door Locks



44 - 49

UNIVERSAL SECURITY

- Chains & Cables • Padlocks • Hasp & Padlock
- Ground Anchors • Load Restraint Straps



50 - 63

ACCESSORIES & SPARE PARTS

- Lubricants • Replacement Locks & Parts



64 - 66

NEW PRODUCTS - COMING SOON

V2

Page 20



V2 COMPACT

Page 20



THE NEW GREEN RANGE

The GREEN range comprises of wheelclamps and hitchlocks to fit the most common trailers, caravans and vehicles. It's bright green coating, makes this product a highly visible deterrent to opportunist thieves, at a very affordable cost.

The well respected SAS heavy-duty red products should still be chosen for maximum protection.

V3

Page 21



V3 COMPACT

Page 21



HL3 HITCHLOCK

Page 31



QUAD SHIELD WHEELCLAMP

Page 22



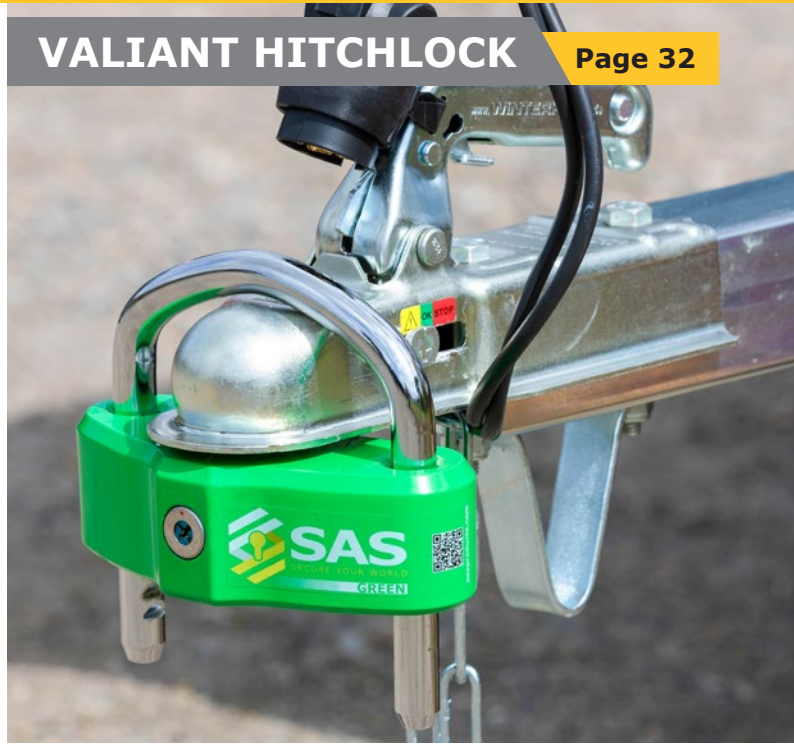
VITAL HITCHLOCK

Page 32



VALIANT HITCHLOCK

Page 32



iLOCK

Page 35



VAULT HITCHLOCK

Page 33



STEERING WHEEL LOCK

Page 41



FORT TU

Page 28



TRAILER SECURITY GUIDE

EXTRA SECURITY

Trailer theft is something every trailer owner fears, so protecting your trailer is the obvious course to take. The simple solution to fix a hitch lock to the hitch when it is not in use, is a very good solution for deterring the average opportunist thief, but is it enough to prevent the more professional thieves?

At SAS we have been protecting trailers through our extensive range of security products since 1987, and whilst no device can completely stop theft, the more security products you fit, the safer your trailer becomes, hopefully causing them to abandon and seek an easier target. This is why SAS offer a complete range of security products to protect your asset from multiple angles, ensuring maximum deterrence and giving you the peace of mind that your trailer will remain in your hands.

BACK DOOR LOCK
- see page 43

SECURITY POST
- see pages 45-47

LOCKING WHEEL BOLT
- see page 23

WHEELCLAMP
- see pages 10-21

CHAIN & PADLOCK
- see pages 50-59

GROUND ANCHOR
- see pages 60-61

HITCHLOCK
- see pages 24-37

HOW SECURE DO YOU WANT YOUR CARAVAN TO BE?

Security devices such as locks and clamps help to protect your caravan from being stolen when it's stationary; whether at home or while on holiday.

Insurance benefits: Insurance companies value extra security implemented by caravan owners and often reward this with policy discounts.

The simple fact is, the more security devices you fit, the more secure your caravan will be...



SECURE YOUR BIKE ON THE RACK
Steel cable locks - see pages 54-55

WHEELCLAMPS Ideal for wherever your caravan is parked, to prevent thieves from being able to tow it away easily. Visible wheelclamps also act as a deterrent, helping to discourage thieves from tampering with your caravan. See pages 10-21

SECURITY POST An effective way to block a caravan, vehicle or trailer from being moved past that point. With an optional tow ball bracket a caravan or trailer can be hitched to the post, and coupled with a hitch lock increases security significantly. See pages 45-47

LOCKING WHEEL BOLTS A great way to hinder wheel theft. See page 23



LEG LOCKS Secure the stabilizing/levelling legs on your caravan in the up or down position. Locking them down can provide the added delay to thieves needed to deter them from even trying. See pages 39

GROUND ANCHORS, CHAINS & PADLOCKS Secure your caravan to the ground, such as when you need to keep your caravan on your drive at home. Ground anchors available to screw into soft ground too. See pages 50-61

HITCHLOCKS Used to cover the towing hitch assembly, preventing anyone from connecting the caravan to another vehicle in a bid to tow it away without your consent. See pages 24-37



Sold Secure: The premier testing and certification for security products



Sold Secure is dedicated to reducing the risk of crime by the assessment of security products. Established in 1992 by Northumbria and Essex Police with the help and backing of the Home Office. Sold Secure is now owned and administered by the Master Locksmiths Association (a not for profit trade association).



The scheme has close ties with a number of constabularies and insurers who provide regular information regarding the methods of theft and the tools utilised by criminals in their areas. This helps to maintain up to date specifications and means security products can be assessed in the light of the risk they are likely to encounter when in use. Now products are tested by a highly motivated team of professional locksmiths under the direction of a small board of directors which meets on a regular basis to administer the scheme and move the process forward in keeping with modern theft methods.



Manufacturers and suppliers can apply to have their products approved by Sold Secure. Products which have been satisfactorily assessed may bear the Sold Secure Quality Mark.

Sold Secure Approval is classified into 3 main categories; Bronze, Silver and Gold. The categories reflect the amount of time per test and the tools that are used vary depending on what test specification is being used. The higher the grading (Bronze is the lowest) the higher the security provided by the product.

Insurance Approved Products



SAS products that have the approval of insurance companies show this symbol. This is an indication that insurance companies have either approved the product, or it meets their criteria but we do recommend that you confirm details of the specific security devices proposed or being used with your insurance company to gain their approval in your circumstances.

WHEEL SECURITY

10 - 23

- 10 - 21 WHEELCLAMPS
- 22 QUAD BIKE WHEELCLAMP
- 23 LOCKING WHEEL BOLTS



SAS offers a well tried, tested and versatile range of wheel locking devices for a whole range of applications from our extensive range of wheelclamps right through to locking wheel bolts.



FOR THE ONLINE WHEELCLAMP SELECTOR GUIDE

Scan the QR Code or visit www.sasproducts.com/wheel-clamp-finder

THE SAS GREEN RANGE

The new SAS GREEN range comprises of wheelclamps and hitchlocks to fit the most common trailers, caravans and vehicles. It's bright green coating, makes this product a highly visible deterrent to opportunist thieves, at a very affordable cost.

The well respected SAS heavy-duty red products should still be chosen for maximum protection.

Technical Support

Contact our technical team if you need assistance choosing the right wheelclamp. Simply send pictures of your wheel, together with tyre sizes, for a free assessment and recommendation either by email to sales@sasproducts.com or WhatsApp to **+44 1444 675889**.



Product Code	Model	Steel Wheels	Alloy Wheels	A Wheel Diameter Range (Critical Dimension)	C Tyre Width (Critical Dimension)	See Page
V122795	V2 COMPACT Wheelclamp	✓	✓	N/A	85 - 165mm	20
V125795	V2 Wheelclamp	✓	✓	N/A	155 - 265mm	20
V133795	V3 COMPACT Wheelclamp	✓	✓	450 - 580mm	up to 145mm	21
V135795	V3 Wheelclamp	✓	✓	550 - 720mm	up to 215mm	21

WHEELCLAMP SELECTOR GUIDE

Wheel Dimensions:

Use our handy selection guide to find the best clamps for your wheels

Technical Support

Our technical team will be pleased to assist you to choose the correct wheelclamp. Simply send pictures of your wheel, together with tyre sizes, for a free assessment and recommendation either by email to sales@sasproducts.com or WhatsApp to **+44 1444 675889**



Side View

End View

Product Code	Model	Steel Wheels	Alloy Wheels	B Approx. Rim Diameter (Guide Only)	C Tyre Width (Critical Dimension)	D Wheel Bolt to Circumference (Critical Dimension)	See Page
1110101	SUPACLAMP DUO Wheelclamp	✓	✓	10-15"	160-225mm	Max 270mm	12
1120121	SUPACLAMP DUO SILVER Wheelclamp	✓	✓	10-15"	160-225mm	Max 270mm	13
1130171	SUPACLAMP DUO GOLD Wheelclamp	✓	✓	10-15"	160-225mm	Max 270mm	13
1211101	HD1 Wheelclamp*	✓		10-15"	110-195mm	Max 280mm	15
1221701	HD2 Wheelclamp*	✓		10-15"	165-225mm	Max 280mm	15
1231701	HD3 Wheelclamp	✓		12-16"	165-225mm	Max 305mm	15
1232701	HD3L Wheelclamp	✓		12-16"	200-300mm	Max 305mm	15
1241701	HD4 Wheelclamp*	✓		10" Flotation	165-215mm	Max 275mm	15
1310101	TRAILER CLAMP Wheelclamp	✓		8"/10"/12" ONLY	max 145mm	n/a	16

Product Code	Model	Steel Wheels	Alloy Wheels	A Wheel Diameter Range (Critical Dimension)	C Tyre Width (Critical Dimension)	See Page
1410173	NEW DEFENDER Wheelclamp	✓	✓	490-700mm	170-275mm	18
1450773	NEW DEFENDER LARGE Wheelclamp	✓	✓	600-830mm	195-295mm	18
1470773	NEW DEFENDER XXL Wheelclamp	✓	✓	720-890mm	225-330mm	18

*Bolt/Nut cover extension pieces are available for the HD range (excluding HD3 and HD3L), where you have offset or centralised rims – See page 15 (HD4 supplied with extension piece as standard)

These tables are intended as a guide only for selecting a suitable wheelclamp, but due to there being so many different tyres and rim configurations, we cannot be held responsible for any inconvenience should it not fit your wheel.

CARAVAN & TRAILER WHEELCLAMPS



SUPACLAMP DUO RANGE

The Supaclamp Duo range is a versatile range designed to fit both Alloy and Steel wheels, very popular with many discerning caravan owners.



- Designed to fit 10"-15" alloy or steel wheels, 160-225mm width
- One-piece clamp, fitting snugly into one wheel bolt hole on alloy wheel and fits easily around wheel and locks securely
- High security steel encased lock
- Double locking for extra security
- Quick and easy to fit
- Excellent visual and physical deterrent
- Supplied in durable plastic carry case for easy storage and transportation



SUPACLAMP DUO

- Strong and popular clamp
- Multiple clamps can be ordered with locks on the same key



SUPACLAMP DUO

SILVER



- Reinforced front arm for extra security
- Shorter reinforced and hardened rear clamp arm for fitting to Ifor Williams horseboxes and trailers with leaf springs
- Sold Secure Silver rated for caravans and trailers



SUPACLAMP DUO

GOLD



- Reinforced front arm for extra security
- Reinforced and hardened rear clamp arm
- High security anti-pick and anti-drill lock barrel
- Sold Secure Gold rated for caravans and trailers



Product Code	Model	Alloy Wheels	Steel Wheels	Wheel Size	Tyre Width
1110101	SUPACLAMP DUO Wheelclamp	✓	✓	10-15"	160-225mm
1110102	SUPACLAMP DUO Wheelclamp, Keyed Alike	✓	✓	10-15"	160-225mm
1120121	SUPACLAMP DUO SILVER Wheelclamp	✓	✓	10-15"	160-225mm
1120122	SUPACLAMP DUO SILVER Wheelclamp, Keyed Alike	✓	✓	10-15"	160-225mm
1130171	SUPACLAMP DUO GOLD Wheelclamp	✓	✓	10-15"	160-225mm
1130172	SUPACLAMP DUO GOLD Wheelclamp, Keyed Alike	✓	✓	10-15"	160-225mm

Replacement locks and spares - see pages 64-66

CARAVAN & TRAILER WHEELCLAMPS



THE ORIGINAL HD RANGE

The Original heavy-duty range is a favourite for steel rim wheels that has stood the test of time. Whether it's for your trailer, or caravan, you can rest assured, knowing this easy to fit clamp will keep your investment safe.

- Range of models to suit many different steel wheels 10"-16", 80-300mm width
- One-piece clamp, covers one wheel nut and fits easily around wheel and locks securely
- High security steel encased lock
- Double locking for maximum security
- Quick and easy to fit
- Excellent visual and physical deterrent
- HD1 only is supplied in durable plastic carry case for easy storage and transportation
- Extension tubes available for deep set wheel bolts (supplied as standard with HD4)
- Multiple clamps can be ordered with locks on the same key across the HD range



HD1 is supplied a durable carry case. (HD2, HD3 and HD4 are supplied in a printed cardboard box)



Deep set rim using optional extension tube.



Product Code	Model	Steel Wheels	Wheel Size	Tyre Width
1211101	HD1 Wheelclamp	✓	10-15"	110-195mm
1211102	HD1 Wheelclamp, Keyed Alike			
1221701	HD2 Wheelclamp	✓	10-15"	165-225mm
1221702	HD2 Wheelclamp, Keyed Alike			
1231701	HD3 Wheelclamp	✓	12-16"	165-225mm
1231702	HD3 Wheelclamp, Keyed Alike			
1232701	HD3L Wheelclamp	✓	12-16"	200-300mm
1232702	HD3L Wheelclamp, Keyed Alike			
1241701	HD4 Wheelclamp	✓	20.5x8-10 or 205/65D10	
1241702	HD4 Wheelclamp, Keyed Alike		extension tube included	
9120050	Extension Tube, straight 1" (25mm)			suitable for HD1 & HD2
9120063	Extension Tube, straight 1.5" (37mm)			suitable for HD1 & HD2
9120075	Extension Tube, straight 2" (50mm)			suitable for HD1 & HD2

Replacement locks and spares – see pages 64-66



THE TRAILER CLAMP

The Trailer Clamp is ideal for trailer tents, camping and jet-ski trailers, as well as general purpose domestic trailers. An incredibly strong clamp for those who value quality, want ease of use and peace of mind!

- Fits 8", 10" and 12" centrally dished trailer wheels
- Secure dome covers all 4 wheel nuts/ bolts (150mm dia x 75mm depth)
- High security steel encased lock
- Double locking for maximum security
- Quick and easy to fit
 - Excellent visual and physical deterrent
 - Supplied in durable plastic carry case for easy transportation
 - Multiple clamps can be ordered with locks on the same key



Product Code	Model	Steel Wheels	Wheel Size
1310101	TRAILER CLAMP Wheelclamp	✓	8"-10"-12" centrally dished
1310102	TRAILER CLAMP Wheelclamp, Keyed Alike		

Replacement locks and spares – see pages 64-66

An SAS wheelclamp is a great visual deterrent with its brightly finished red colour to encourage potential thieves to look for an easier option elsewhere.

Whether you are living your life to the full with leisure activities in your motorhome, caravan, boat or camping trailer or just concerned about securing your gardening trailer or car, then SAS have products to lock a variety of different wheels to help against theft.



Steering Wheel Lock
- see page 41



Wheelclamp for alloy wheels
- see pages 12-15



Wheelclamp for steel wheels
- see pages 14-16

Hitchlocks
- see pages 24-37



New Defender Wheelclamp
- see pages 18-19



New Defender Wheelclamp
- see pages 18-19



Wheelclamp for alloy wheels
- see pages 12-15



WHEELCLAMPS

THE NEW DEFENDER RANGE

For those who take security seriously, the New Defender will give you a versatile clamp that won't be beaten easily. The three sizes available cover a vast range of vehicles, including large off-road vehicles.



NEW DEFENDER



NEW DEFENDER LARGE



NEW DEFENDER XXL



- *Unique design fully protects against driving out or removal by tyre deflation*
- *High security anti-pick, anti-drill, steel encased lock*
- *Fits over wheel trims on steel or alloy wheels*
- *Adjustable arms fit around wheel and lock securely*
- *Excellent visual and physical deterrent*
- *New Defender is supplied in a durable plastic carry case*
- *New Defender Large and XXL are supplied in a cardboard box*
- *Sold Secure Gold tested and approved for caravans and automotive*

Here is a wheel clamp that will definitely not surrender to bolt cutters or hacksaw- no way... it is really thief resistant and tough.

John Marchmont, Caravanners Handbook





New Defender



New Defender Large



New Defender XXL

👍 Good effective design, solid and well made, denies access to wheel nuts, a good visual deterrent, easy to fit at a reasonable price. 👍

Camping and Caravan Magazine



Product Code	Model	Alloy Wheels	Steel Wheels	Min-Max Wheel Diameter	Tyre Width
1410173	NEW DEFENDER Wheelclamp	✓	✓	490-700mm	170-275mm
1410174	NEW DEFENDER Wheelclamp, Keyed Alike	✓	✓	490-700mm	170-275mm
1450773	NEW DEFENDER LARGE Wheelclamp	✓	✓	600-830mm	195-295mm
1450774	NEW DEFENDER LARGE, Wheelclamp, Keyed Alike	✓	✓	600-830mm	195-295mm
1470773	NEW DEFENDER XXL Wheelclamp	✓	✓	720-890mm	225-330mm
1470774	NEW DEFENDER XXL Wheelclamp, Keyed Alike	✓	✓	720-890mm	225-330mm

Replacement locks and spares – see pages 64-66

SAS GREEN WHEELCLAMPS

GREEN V2 RANGE

Simple, lightweight, easy to use wheelclamp. Suitable for caravans, motorhomes, trailers, quad bikes, cars, and more.



V2
COMPACT

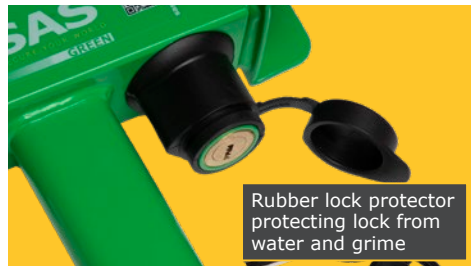


V2

- Two sizes available to fit a wide range of tyre widths
- Simple to use and can be fitted in seconds
- Easy to operate integral push key lock, supplied with 2 keys for releasing
- Unique design fully protects against driving away or removal by tyre deflation
- Designed to secure your vehicle
- Excellent visual & physical deterrent.



Soft PVC coated jaws to avoid scratching alloy wheels



Rubber lock protector protecting lock from water and grime



Adjustable arms fit around wheel and lock securely, with 6-9 locking positions



GREEN V3 RANGE

A simple wheel lock to prevent unwanted movement.

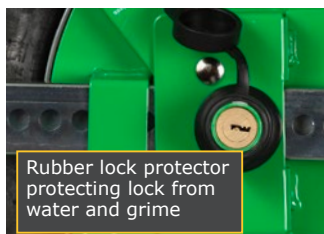


**V3
COMPACT**

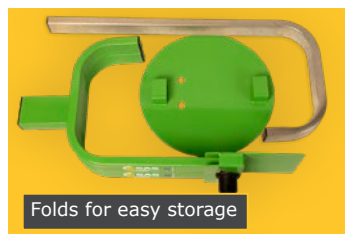


V3

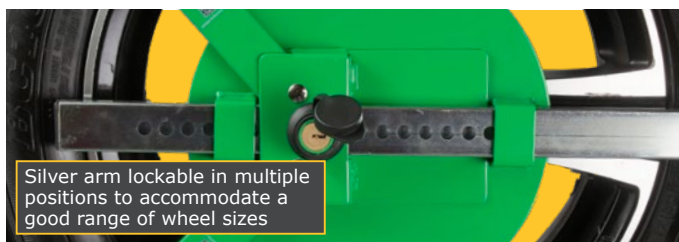
- Two sizes available to fit a wide range of tyre widths
- Quick and simple to fit
- Easy to operate integral push key lock, supplied with 2 keys for releasing
- 3 arm design, fully protects against driving away or removal by tyre deflation
- Covers wheel bolts to avoid wheel removal
- Insurance approved design
- Fits over wheel trims on steel or alloy wheels
- Excellent visual & physical deterrent



Rubber lock protector protecting lock from water and grime



Folds for easy storage



Silver arm lockable in multiple positions to accommodate a good range of wheel sizes



Product Code	Model	Steel Wheels	Alloy Wheels	Tyre Width	Wheel Diameter Range
V122795	GREEN V2 COMPACT Wheelclamp	✓	✓	85 - 165mm	N/A
V125795	GREEN V2 Wheelclamp	✓	✓	155 - 265mm	N/A
V133795	GREEN V3 COMPACT Wheelclamp	✓	✓	up to 145mm	450 - 580mm
V135795	GREEN V3 Wheelclamp	✓	✓	up to 215mm	550 - 720mm



WHEEL

TOWING HITCH

CARAVAN

VEHICLE

PROPERTY

UNIVERSAL

ACCESSORIES

NOTES

WHEELCLAMPS

QUAD SHIELD

SAS have launched this new locking system, primarily to protect ATV's and UTV from the growing theft problems owners are encountering. It enables you to drive your ATV or UTV into the clamp system which is bolted to the ground.



- Simply drive your ATV or UTV into the clamp system, pull lever to enclose top of wheel and push locks to secure
- Unique design fully protects against driving out or removal by tyre deflation
- Double locking system, simple push to lock, with key only required to unlock
- High security anti-pick, anti-drill, steel encased locks
- Fixing bolts supplied to secure the clamp to concrete floor
- Excellent visual and physical deterrent



📖 An estimated 900-1200 quad bikes and ATVs are stolen in England and Wales each year. Thefts of quad bikes and ATVs cost their customers £2.2 million in 2021 📖

NFU Mutual in the Rural Crime Report 2022



Product Code	Model	Alloy Wheels	Steel Wheels	Tyre Diameter	Tyre Width
1730081	QUAD SHIELD Wheelclamp	✓	✓	up to 27" (685mm)	up to 10.5" (265mm)

LOCKING WHEEL BOLTS

LOCKING WHEEL BOLTS

Locking wheel bolts, as used on most cars, are an excellent way to hinder wheel theft.

The SAS locking wheel bolts will fit both alloy and steel wheels on most caravans and trailers. SAS offers two levels of security, with the premium set giving you that extra reassurance.

- Option of 2, 4 or 6 bolts in set, for single, twin and triple axle trailers/caravans
- Suitable for steel and alloy wheels with two different seat types
- Supplied in storage case, complete with unique matching key



Product Code	Set Quantity	Model	Seat Type	Thread
1812187	2	Locking Wheel Bolts	Conical	M12x1.5mm
1814187	4			
1832189	2	Premium Locking Wheel Bolts	Conical	M12x1.5mm
1834189	4			
1836189	6			
1834289	4	Premium Locking Wheel Bolts	Conical	M14x1.5mm
1836289	6			
1852189	2	Premium Locking Wheel Bolts	Spherical	M12x1.5mm
1854189	4			
1856189	6			
9188701	Replacement key only for 181 Locking Wheel Bolts			
9188901	Replacement key only for 183 & 185 Premium Locking Wheel Bolts			

SEAT TYPES



Conical



Spherical



Locking Wheel Bolts



Premium Locking Wheel Bolts

WHEEL

TOWING HITCH

CARAVAN

VEHICLE

PROPERTY

UNIVERSAL

ACCESSORIES

NOTES

TOWING HITCH SECURITY

24 - 37

- 24-27 HITCHLOCK SELECTOR GUIDES
- 28-34 HITCHLOCKS
- 35 REPLACEMENT COUPLING LOCKS
- 35-37 TOWING EYE LOCKS



Using an SAS hitchlock is a great way to make it difficult for your caravan or trailer to be stolen. All can be fitted when unhitched from your towing vehicle, but many also fit whilst stationary and hitched to your towing vehicle. Great for deterring motorway services thieves!



**FOR THE LATEST
HITCHLOCK
SELECTOR GUIDE**

Scan the QR Code or visit
[www.sasproducts.com/
hitch-lock-finder](http://www.sasproducts.com/hitch-lock-finder)

SAS GREEN RANGE

The new SAS GREEN range comprises of wheelclamps and hitchlocks to fit the most common trailers, caravans and vehicles. It's bright green coating, makes this product a highly visible deterrent to opportunist thieves, at a very affordable cost.

The well respected SAS heavy-duty red products should still be chosen for maximum protection.



HITCHLOCK SELECTOR GUIDE

Why fit a hitchlock to my trailer or caravan?

SAS hitchlocks are an essential item for anyone with a trailer or caravan, as they are so easy to steal if they are not locked – just hitch up and go! The SAS hitchlock range comprises of various easy to fit options to give you that peace of mind that someone else can't easily hook up to their vehicle and drive off.

Many hitchlocks in the SAS range offer you the option to lock your caravan or trailer to the towing vehicle when parked in the motorway services. Or, if you are a landscape gardener or tree surgeon, you may wish to lock your trailer or woodchipper to your truck whilst working in the back garden.

Does your trailer have a ball hitch or an eye hitch?

Ball Style Hitch

50mm ball hitch is the most common for trailers and on virtually all caravans

Eye Hitch



If YES
Go to pages
35-37

Does your trailer/caravan have brakes?

Braked trailers will generally have a rubber bellow directly behind the hitch, then a braking damper device mounted on the drawbar frame.



If YES
Go to page
27

No

Is your trailer an unbraked version?

Where the hitch is mounted directly to a fixed drawbar on the trailer.



If YES
Go to page
26

Unsure?

Technical Support

Our technical team will be pleased to assist you to choose the correct Hitchlock. Simply send pictures of your Hitch coupling, for a free assessment and recommendation. either by

email to sales@sasproducts.com or WhatsApp to +44 1444 675889

HITCHLOCK SELECTOR GUIDE

HITCHLOCKS FOR UNBRAKED TRAILERS

Where the hitch is mounted directly to a fixed drawbar on the trailer.

In addition to multiple different hitch heads being used on trailers, manufacturers also use a vast range of different drawbars and fixing methods on unbraked trailers. SAS are always seeking to develop and adapt hitchlocks to cater for as many as possible. Below is a guide to help identify the right hitchlock for your trailer.

Pressed Steel Hitch

There are many different versions, from various manufacturers, but they are typically have the folded rim around the bottom, being pressed from a sheet of steel. The metal is normally zinc plated and a relatively smooth finish.



Bradley Cast Hitch

Cast hitch heads are thicker material and a slightly rough surface to touch.



Indespension Triple Lock



Bradley Double Lock (D Handle)



Knott Cast Hitch



Y-Shaped Coupling on A-Frame Drawbar



Drawbar must have an angled rear shape coupling as shown in picture above.

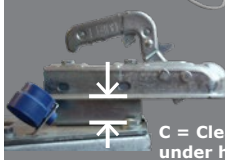
Straight Drawbar



A-Frame to Straight Drawbar



A-Frame Drawbar with straight coupling



C = Greater than 25mm

C = Less than 25mm

Straight Drawbar



A-Frame to Straight Drawbar



A-Frame Drawbar



Straight Drawbar



A-Frame to Straight Drawbar



A-Frame Drawbar



ORIGINAL HL3 HITCHLOCK

2330751



ORIGINAL HL2 HITCHLOCK

2320751



FORT U HITCHLOCK

2180761



FORT TU HITCHLOCK

2190761



Most unbraked trailers are fitted with a breakaway safety cable. Sometimes these cables are fitted to small metal brackets and these brackets can obstruct the fitting of the hitchlocks. In this situation, seek advice from your trailer specialist as they will likely be able to adapt these slightly to allow fitting.

These tables are intended as a guide only for selecting a suitable hitchlock, but due to there being so many variants on trailer hitches and drawbars, SAS cannot be held responsible should it not fit your hitch.

Replacement Barrel Locks
- see pages 35



See Hitch Padlocks
- page 34



See Universal Green Range - pages 32-33



HITCHLOCKS FOR BRAKED TRAILERS & CARAVANS

Braked trailers will generally have a rubber bellow directly behind the hitch, then a braking damper device mounted on the drawbar frame.



	Hitch Manufacturer	Hitch Model	SAS Hitchlocks							
			2110761 FORT	2120761 FORT A	2140761 FORT AK	2130761 FORT B	2160761 FORT K	2170761 FORT T	2210731 FORT 2 G	2310751 HL1
A1	ALBE	Cast Hitch		●			●*			
B1	ALBE	Pressed Steel Hitch	●				●			●
C1	AL-KO	AK160, AK180, AK300	●				●		●	●
D1	AL-KO	AK161, AK270	●*	●			●*			
E1	AL-KO	AK350 Cast Hitch		●						
F1	AL-KO	AK301			●	●				
	AL-KO	AK351		●	●					
G1	AL-KO	AKS1300							●	
H1	AL-KO	AKS2004							●	
J1	AL-KO	AKS3004							●	
K1	BRADLEY	Autohead 2.7 & 3.5kg				●				
L1	BRADLEY	Double Lock						●		
L2	INDESPENSION	Triplelock						●		
L5	KARTT	KCH3000 Cast Hitch					●			
M1	KNOTT	Avonride Cast Hitch		●						
N1	KNOTT	Pressed Steel Hitch					●			
O1	KNOTT	K27 & K35 Cast Hitch		●						
O2	KNOTT	Cast Hitch		●						
O6	SPP	Pressed Steel Hitch					●			
O7	SPP	Cast Hitch					●			
P1	WINTERHOFF	WW8	●				●			●
Q1	WINTERHOFF	WW13	●				●			●
R1	WINTERHOFF	WW30 Cast Hitch		●			●*			●*
S1	WINTERHOFF	WW200 Cast Hitch		●						

* If the hitch has a vertical fixing bolt use the FORT A hitchlock instead.

● Recommended

● Alternative

HITCHLOCKS

FORT RANGE



FORT HITCHLOCK

FORT A HITCHLOCK

FORT AK HITCHLOCK

FORT B HITCHLOCK

FORT K HITCHLOCK

FORT T HITCHLOCK

FORT TU HITCHLOCK

FORT U HITCHLOCK

The FORT hitchlock series covers a wide range of trailer couplings on the market.

- Can be fitted whilst caravan/trailer is hitched or unhitched from towing vehicle
- Prevents vehicle and caravan/trailer being separated in a car park or motorway service station
- Quick and easy to fit, strong twin wall steel structure fully encloses hitch and bolts to provide maximum protection against attack
- Maximum security safe-style enclosed lock, with twin locking pins and anti-drill protection
- Secure cruciform style keys
- Excellent visual and physical deterrent
- Compact and easily stored – ideal for touring

Use our Hitchlock selector guide to select the correct lock for your hitch - see pages 25-27



FORT A

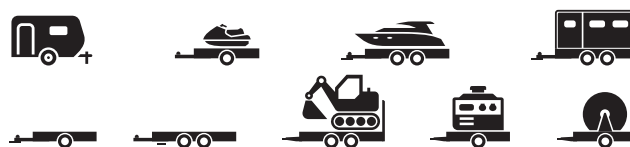


FORT U



Hitchlock securing trailer to security post - see pages 45-47

A neat, immensely strong and impressive hitchlock. Dinghy Sailing Magazine



Product Code	Model	Secure Unhitched	Secure Hitched*
2110761	FORT Hitchlock		
2110762	FORT Hitchlock - Keyed Alike	✓	✓
2120761	FORT A Hitchlock		
2120762	FORT A Hitchlock - Keyed Alike	✓	✓
2140761	FORT AK Hitchlock		
2140762	FORT AK Hitchlock - Keyed Alike	✓	✓
2130761	FORT B Hitchlock		
2130762	FORT B Hitchlock - Keyed Alike	✓	✓
2160761	FORT K Hitchlock		
2160762	FORT K Hitchlock - Keyed Alike	✓	✓
2170761	FORT T Hitchlock		
2170762	FORT T Hitchlock - Keyed Alike	✓	✓
2190761	FORT TU Hitchlock		
2190762	FORT TU Hitchlock - Keyed Alike	✓	✓
2180761	FORT U Hitchlock		
2180762	FORT U Hitchlock - Keyed Alike	✓	✓

* The police do not like your caravan or trailer to be locked to the vehicle whilst travelling, as it makes it difficult to separate in the case of an accident.

Replacement locks - see pages 64-66

WHEEL

TOWING HITCH

CARAVAN

VEHICLE

PROPERTY

UNIVERSAL

ACCESSORIES

NOTES

HITCHLOCKS

FORT 2 GOLD HITCHLOCK

The FORT 2 GOLD hitchlock is a Sold Secure Gold rated lock, very popular as it fits the widely used AL-KO stabiliser caravans coupling heads.



Strong main enclosed top section covers hitch fitting bolts and release handle



Lock positioned to make it too difficult to attack

Lower enclosure gives double strength protection



Supplied with ABS towball to provide extra security when unhitched

- Can be fitted to a caravan/trailer to secure hitched* or unhitched from towing vehicle
- Prevents vehicle and caravan/trailer being separated in a car park or motorway service station
- Twin wall design doubling strength against attack
- Fits 1300, 2004, 3004 AL-KO stabilising heads and standard AL-KO hitch heads
- Fully encloses hitch handle and bolts
- Supplied with ABS towball to provide extra security when unhitched
- High security steel encased lock
- Sold Secure Gold tested and approved
- Quick and easy to fit
- Excellent visual and physical deterrent

A worthy product.

Caravan Buyer Magazine



Product Code	Model	Secure Unhitched	Secure Hitched*
2210731	FORT 2 GOLD Hitchlock	✓	✓
2210732	FORT 2 GOLD Hitchlock - Keyed Alike		
9220021	Replacement black ABS towball		

Replacement locks - see page 65

* The police do not like your caravan or trailer to be locked to the vehicle whilst travelling, as it makes it difficult to separate in the case of an accident.

THE ORIGINAL SAS HITCHLOCKS



HL1 HITCHLOCK



HL2 HITCHLOCK



HL3 HITCHLOCK



The Original hitchlock range is designed to fit a range of press steel hitches on both braked and unbraked trailers.

The HL1 will fit many pressed steel hitches mounted on braked trailer units

The HL2 is designed primarily for unbraked trailers with deeper drawbars, virtually any depth and up to 60mm width drawbar. It will also fit many trailers having a rest stand fitted underneath the hitch using the hitch fitting bolts

The HL3 hitchlock is designed for unbraked trailers, with A-Frame drawbars that are fitted with a Y-shaped coupling hitch

Use our Hitchlock selector guide, on pages 25-27 to choose the correct lock for your hitch

- Can be fitted whilst caravan/trailer is hitched or unhitched from towing vehicle
- Prevents vehicle and caravan/trailer being separated in a car park or motorway service station, when stationary
- Quick and easy to fit, strong steel structure fully encloses hitch and bolts
- Fitted with high security anti-drill radial pin tumbler lock
- Excellent visual and physical deterrent
- Compact and easily stored – ideal for touring

👍 Voted best buy for its security and value. 👍

Caravan Life

Product Code	Model	Fit Unhitched	Fits Hitched*	Fits
2310751	HL1 Original Hitchlock	✓	✓	See Selection Guide on pages 25-27
2310752	HL1 Original Hitchlock, Keyed Alike			
2320751	HL2 Original Hitchlock	✓	✓	
2320752	HL2 Original Hitchlock, Keyed Alike			
2330751	HL3 Original Hitchlock	✓	✓	
2330752	HL3 Original Hitchlock, Keyed Alike			

Replacement locks - see page 65

SAS GREEN HITCHLOCKS

GREEN RANGE HITCHLOCK

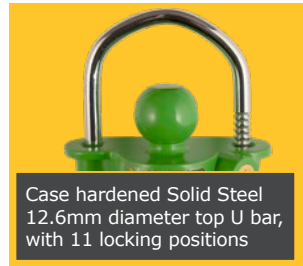
The VITAL and VALIANT are a quick, easy and lightweight hitch coupling lock to fit most 50mm ball style trailer hitch couplings



VITAL



2 Secure Cross Style Keys supplied for unlocking



Case hardened Solid Steel 12.6mm diameter top U bar, with 11 locking positions



Designed to fit most trailers with 50mm ball style coupling



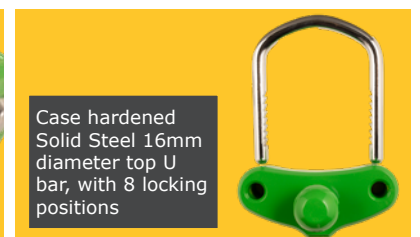
VALIANT



Designed to fit most trailers with 50mm ball style coupling



2 Secure Cross Style Keys supplied for unlocking



Case hardened Solid Steel 16mm diameter top U bar, with 8 locking positions

The SAS GREEN VITAL Hitchlock

- A quick and easy coupling lock to deter trailer thieves.
- Handy lightweight design
- Universal design to fit most 50mm ball style trailer couplings.
- Very quick to install without using keys
- Locking in 11 positions, giving flexibility for use on many different couplings
- Very visible with bright powder coating to deter thieves

The SAS GREEN VALIANT Hitchlock

- Universal double-locking trailer coupling lock
- A quick and easy coupling lock to deter thieves.
- Robust case-hardened double locking top U bar
- Double ratchet system, locking in 8 positions, giving flexibility for use on many different couplings
- Very quick to install without using keys
- Universal design to fit most 50mm ball style trailer couplings
- Highly visible with bright powder coating to deter thieves
- 2 secure cross-style keys supplied for unlocking



VAULT HITCHLOCK

The VAULT hitchlock range is designed to fit many pressed steel hitches on both braked and unbraked trailers.



Coupling trailer lock

Secures your trailer to help prevent it being stolen, when not in use.

- Quick and easy to fit
- Robust steel construction with bright powder coating
- Universal design to fit most trailer couplings
- Highly visible to deter thieves
- Hardened stainless steel disc padlock
- Supplied with 3 keys



Strong closed shackle disc padlock



Two locking positions to fit a wide range of pressed steel couplings



Box design enclosing coupling

Product Code	Model	Lock	Fits unhitched	Fits hitched
V222765	GREEN VITAL Hitchlock	Single Locking on U Bar	✓	✗
V255767	GREEN VALIANT Hitchlock	Double Locking on U Bar	✓	✗
V266733	GREEN VAULT Hitchlock	Disc Padlock	✓	✗

See replacement disc padlock on page 56.



HITCHLOCKS

KB21 UNILOCK

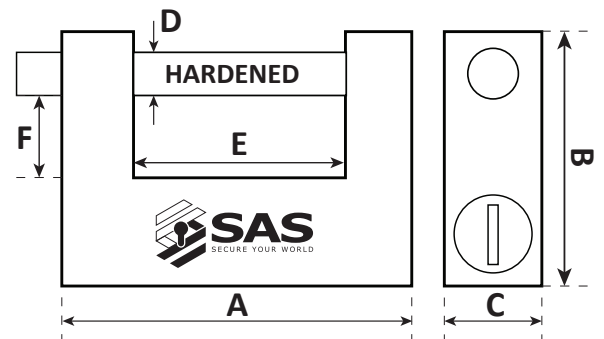
Special purpose shackle lock suitable for Knott pressed steel hitches with curved handle and a hole right through.

The quick, simple and easy way to lock a hitch.



Knott pressed steel head

- Solid brass lock body, giving great durability.
- Enclosed hardened chrome plated steel shackle, for increased strength.
- High precision 6 pin brass lock and cylinder core, for a smooth operation
- Supplied with 3 Nickel plated brass keys.
- Also available Keyed Alike.



Blue Line box trailer rear shutter door or ramp catches



Ifor Williams trailer rear door/ramp

Product Code	Model	A	B	C	D	E	F	Keys Supplied
8300021	KB21 UNILOCK	80	55	18	7	42	19.9	3
8300022	KB21 UNILOCK, Keyed Alike							

Dimensions shown are an approximate maximum (mm)

REPLACEMENT LOCKS FOR HITCH COUPLINGS

Replacement integral locks for popular hitches.



Product Code	Model	Keys Supplied
9003313	SAS ULTIMATE barrel lock for Bradley Auto & Doublelock hitch heads	3
9003413	SAS ULTIMATE barrel lock for Bradley Auto & Doublelock hitch heads, Keyed Alike	3
9004712	Replacement barrel lock for AL-KO AK301 & AK351 hitch heads	2
9005712	Replacement barrel lock for Knott Avonride hitch heads	2

SAS GREEN HITCHLOCKS

GREEN iLOCK

The SAS GREEN iLOCK is a versatile eye lock designed to fit a wide range of trailers using an eye type coupling.

A simple design using a main shaft fitted with a robust round padlock with enclosed shackle making it difficult to attack.



Product Code	Model	Fits unhitched	Fits hitched	Fits	Eye Dimensions	
					Eye Size	h
V283771	GREEN iLOCK Eye lock	✓	✗	Most 40 & 50mm eye couplings	40-60mm	Up to 35mm

Round Padlock included - Replacement code 8300071 on page 57

WHEEL

TOWING HITCH

CARAVAN

VEHICLE

PROPERTY

UNIVERSAL

ACCESSORIES

NOTES

HITCHLOCKS

TOWING EYELOCKS

The SAS HD BOX EYELOCK is a robust, heavy-duty box eye lock constructed to prohibit unbolting the towing eye hitch from the draw bar.

Made of a strong 5mm thick steel box section, making it virtually indestructible, and is a popular product not only for utility contractors to secure their plant trailers, but also fitting many hauliers drag-type truck trailers, towable agricultural equipment and trailers. One size fits most towing eyes.



**HEAVY DUTY
BOX EYELOCK**

- Robust heavy-duty box eyelock, constructed to prohibit unbolting the towing eye hitch from the drawbar
- High security steel encased lock
- Quick and easy to fit
- Excellent visual and physical deterrent
- Can be keyed alike for fleets
- Strong 5mm thick steel casing



EL50XL



HD BOX EYELOCK



MAX 139mm wide



**Wheelclamps
- see pages 10-21**

TOWING EYELOCKS

Towing eye hitches are most commonly used for the heavier trailers, such as generator, compressor, plant and farm machinery trailers.

SAS eye locks are constructed from thick steel, making them virtually indestructible, and clearly an industry leading product.

Heavy construction includes:-



10mm Plate Steel



- Three versions available to fit 30, 40 and 50mm towing eyes
- Fully encloses eye
- Premium security steel encased lock
- Quick and easy to fit
- Excellent visual and physical deterrent
- Multiple eye locks can be ordered with locks on the same key



EL3040



EL50



EL50XL



Product Code	Model	Fits Unhitched	Fits Hitched	Fits	Maximum Eye Dimensions	
					w	h
2711721	HD BOX EYELOCK	✓	✗	Most Towing Eye Hitches	137mm	108mm
2711722	HD BOX EYELOCK, Keyed Alike					
2731721	EL3040 EYELOCK	✓	✗	30 & 40mm Towing Eye Hitches	100mm	32mm
2731722	EL3040 EYELOCK, Keyed Alike					
2751721	EL50 EYELOCK	✓	✗	50mm Towing Eye Hitches	113mm	39mm
2751722	EL50 EYELOCK, Keyed Alike					
2761721	EL50XL EYELOCK	✓	✗	50mm Towing Eye Hitches	124mm	49mm
2761722	EL50XL EYELOCK, Keyed Alike					

Replacement locks - see page 65

WHEEL

TOWING HITCH

CARAVAN

VEHICLE

PROPERTY

UNIVERSAL

ACCESSORIES

NOTES

CARAVAN SECURITY

38 - 39

38-39 LEG LOCKS

We understand securing your caravan from theft is very important to preserve those lifetime experiences you have built up.

Wheelclamps and hitchlocks in the previous sections are important, but further options are available too...



HEAVY-DUTY LEG LOCKS

The seemingly small and insignificant leg locks are often forgotten, but many have proved their value. Lock your corner steadies in the down position and your caravan becomes very difficult to tow away!



Another barrier to delay the time conscious thieves, these simple to fit devices are worth the modest premium.

Caravan Buyer Magazine



- Available as twin or quad packs
- Packs are keyed alike, and supplied in a handy storage case
- Double locking system – need key and Hex key
- Strong anti-crush steel construction hinders removal
- Designed to fit 19mm hex winders, where you have access to the corner steady nuts, not shielded by the caravan body
- Quick and easy to fit
- Excellent visual and physical deterrent
- Each leg lock supplied with two keys, multiple sets have matching keys
- Each set supplied complete with Allen key and Hex key too.



Twin pack in case



Quad pack in case

Product Code	Model	Case Supplied
3120141	HDLL2, Heavy-Duty Leg Lock, Twin Pack, Keyed Alike	✓
3140141	HDLL4, Heavy-Duty Leg Lock, Quad Pack, Keyed Alike	✓
Spare Parts		
9310034	Allen key	
9310036	Metal inner casing tube only	
9310037	Hex key	
9319935	Outer casing tube only (without lock)	
9004112	Lock with 2 keys	
9300012	Case only for twin pack	
9300014	Case only for quad pack	

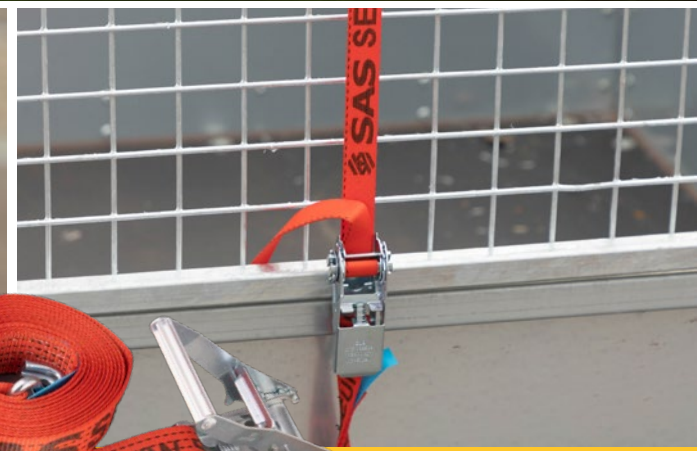
VEHICLE SECURITY

40 - 43

- 41 STEERING WHEEL LOCKS
- 42 KINGPIN LOCKS
- 43 TRAILER DOOR LOCKS



With an ever increasing reported number of theft and vandalism incidents to vehicles, many are proving the benefit of using SAS Security Products to protect their fleet.



Load Restraint Straps - see page 62-63



Wheelclamps - see pages 10-21

STEERING WHEEL LOCK

In today's world of electronic theft of cars, it's great to add another layer of protection to your vehicle to deter thieves. Do the modern thieves that steal vehicles though electronic means also have the means to remove physical security devices?



Additional physical security such as locks and immobilisers are still highly recommended.

Metropolitan Police, Crime Prevention Advice

Universal Crook Steering Wheel Lock

- Simple and quick fit to steering wheel
- Sturdy Quad Claw, twin bar design
- Ratchet design allowing quick fitment without using key
- Easy to operate integral release lock, supplied with 2 keys
- Robust PVC coated claws prevent damage to steering wheel
- Excellent visual & physical deterrent
- Slide together for easy storage
- Lightweight and compact for easy use

There were 130,521 motor vehicle thefts in England and Wales in 2022/23, a large increase when compared with the previous year..

Statista, Published 7th Dec 2023



Product Code	Model	Keys Supplied
5880765	UNIVERSAL CROOK STEERING WHEEL LOCK	2



VEHICLE SECURITY

KING PIN LOCKS

The SAS Heavy-Duty Steel King Pin lock fits easily onto the pivot king pin of the trailer to prevent unauthorised coupling of the tractor unit.

- Maximum security for 5th wheel trailers
- Drill and pick resistant high quality lock
- Can be ordered as keyed alike for fleet operators wanting multiple units
- Quick and easy to fit
- Excellent visual and physical deterrent
- Supplied complete with 3 keys per unit



Very strong steel construction



Product Code	Model	Keys Supplied
5414729	KING PIN LOCK – Heavy-Duty Steel Construction	3
5414730	KING PIN LOCK – Heavy-Duty Steel Construction, Keyed Alike	3

Eye locks for rigid lorry trailers
– see pages 35-37



HD BOX EYELOCK

TRAILER DOOR LOCKS

The SAS rear door lock is designed to fit the handles fitted on the rear ramp door of the Debon box trailers. Increase the security of the goods in your trailer, by locking the rear ramp door securely.



- Robust slide together box lock
- Simply surrounds handle in twin wall steel enclosure to provide maximum protection
- Robust anti-drill, anti-pick lock
- Simple to operate push lock
- Fits left or right side. Also available as pack of 2 for maximum security



To fit Debon box trailers fitted with this handle.



Product Code	Model	Keys Supplied
5610781	TRAILER DOOR LOCK	3
5610782	TRAILER DOOR LOCK, Keyed Alike	3
5620781	TRAILER DOOR LOCK, Pack of 2 on same key	6



Van double door locking system – see page 56



Padlocks - see pages 56-59

PROPERTY SECURITY

44 - 49

- 45-47 SECURITY POSTS
- 48 ROLLER SHUTTER LOCKS
- 49 GARAGE DOOR SECURITY

Simple, physical and effective range of security products designed to hinder undesired access to valuable equipment kept in your garage, driveway or property.



Roller Shutter Door Locks
- See page 48



Garage Defender Locks
- See page 49

For security chains, cables, padlocks, ground anchors
- see pages 50-61



SECURITY POSTS

A complete range of fixed or removable security posts for securing any driveway or entrance to your property.



- Made from heavy-duty 80 x 80mm steel box section - 800mm post height
- Available in various options either removable, folding or fixed
- Optional tow ball adapter allows you to hitch your caravan or trailer to the post. Gain extra security by locking trailer or caravan to post and use a SAS hitch lock too – the more you lock together the better!
- Powder coated black finish with reflective stickers



FIXED SECURITY POSTS

HD CONCRETE IN



- *Designed to match folding and removeable posts, for positions where no access is required*
- *Reinforcing bars supplied*
- *Simply concrete into the ground*

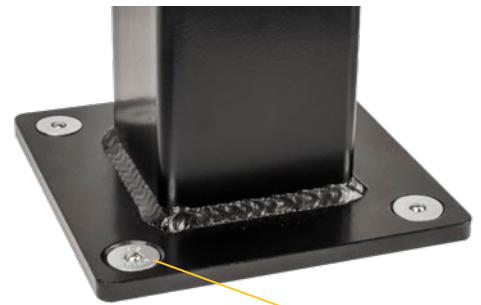
6381000

HD BOLT DOWN



- *Designed to match folding and removeable posts, for positions where no access is required*
- *Bolt down security fixing, with added ball bearing security*
- *Bolt down to concrete to save digging up the ground, using rawl bolts supplied*

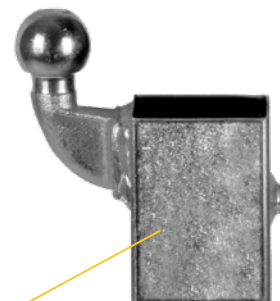
6361000



Fix into the concrete with the rawl bolts, then secure by hammering ball bearing into the Allen slot to stop removal.



TOW BALL ADAPTOR



Optional tow ball adaptor allows you to hitch your caravan or trailer to the post. Gain extra security by locking trailer or caravan to post and use a SAS hitchlock too – the more you lock together the better!

ADJUSTABLE SECURITY POSTS

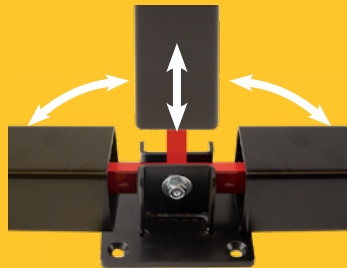
HD FOLDING



- Bolt down security fixing, with added ball bearing security
- Bolt down to concrete to save digging up the ground, using rawl bolts supplied
- Simply lift and fold forward or backwards to gain access
- Smart but simple internal locking system
- Easily accessible lock on side of post, mounted away from ground dirt



Simple lift and fold system

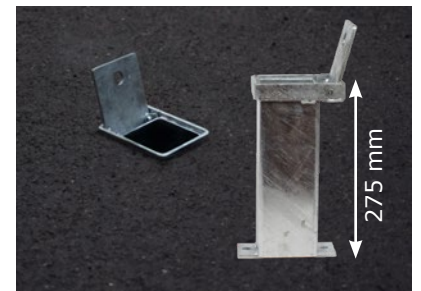


6331075

HD REMOVABLE



- Anti-drill and anti pick lock at the top away from ground dirt
- Robust handles for easy lifting for removal
- Robust galvanised ground socket with hinged lid gives flush finish when post removed



Can be mounted flush to the ground

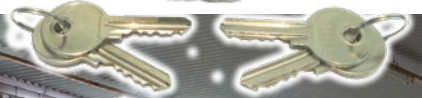
6311075

Product Code	Description	Dimensions
6311075	HD REMOVABLE SECURITY POST, with ground Socket	800mm above ground
6311076	HD REMOVABLE SECURITY POST, with ground socket - Keyed Alike	80x80mm HD Box Section
6331075	HD FOLDING SECURITY POST, Bolt Down	80x80mm HD Box Section 800mm height
6331076	HD FOLDING SECURITY POST, Bolt Down - Keyed Alike	
6361000	HD BOLT DOWN SECURITY POST, Fixed	80x80mm HD Box Section 800mm above ground
6381000	HD CONCRETE IN SECURITY POST, Fixed	
6301100	Optional Tow Ball Hitch Adapter to fit HD SECURITY POST	
9630010	Replacement Ground Socket, galvanised with hinged lid	275mm into ground

ROLLER SHUTTER DOOR LOCKS

Comprising of oval lock holders for welding to roller shutter track both sides, and removable bullet locks to insert to secure the shutter.

- High security bullet locks supplied in pairs with oval lock housings
- Complete with 2 keys per lock, each pair of locks keyed alike
- Adds maximum security to your roller shutters
- Pin length 53mm



Product Code	Model
6610016	ROLLER SHUTTER DOOR LOCKS (set of 2 oval lock holders and 2 bullet locks)

SAS ULTIMATE GARAGE DEFENDER ACCESSORIES

Product Code	Model	For Garage Defender	For Garage Defender Master
8300075	Replacement Padlock - C Type Armour Plated	✓	
8300071	Replacement Padlock - Round Solid Steel Secure Padlock		✓
9610013	Bolt Down Plate Only	✓	
9610023	Bolt Down Plate Only		✓
9960032	Rawl Bolt for fixing plate - Pair	✓	✓
9960010	10mm Masonry Drill Bit	✓	✓
9960016	16mm Masonry Drill Bit	✓	✓
9960041	Fixing Kit - includes 1xRawl Bolt, 10 & 16mm Drill Bits & Allen Key	✓	✓

GARAGE DEFENDER

The SAS ULTIMATE GARAGE DEFENDERS are a great product to increase the security of an up-and-over garage door.

The DEFENDER units locks onto a solid steel base plate with a padlock to block the tilt action of the door. Two models available.

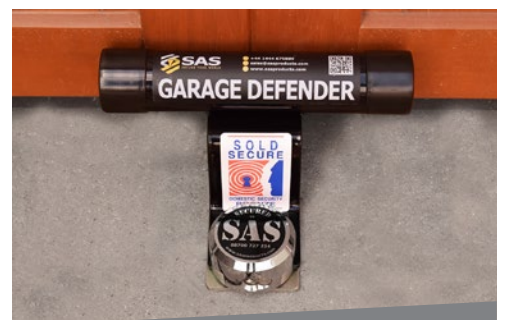
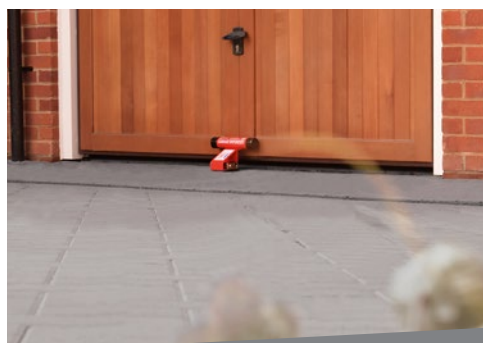


- Secure visual lock for up-and-over garage doors
- Powder coated Garage Defender frame gives an excellent visual deterrent too
- Supplied with armour plated padlock
- Steel base measures 78mm x 215mm, which is bolted to ground with two expandable security rawl bolts
- Fixing bolts supplied for easy fitting into concrete/brick
- For concrete applications we recommend 100-125mm (4-5 inches) of good solid concrete outside the closed garage door



Product Code	Model	Rawl Bolts included	Padlock included	Colour
6111875	SAS ULTIMATE GARAGE DEFENDER	2	C-Type	Red
6121871	SAS ULTIMATE GARAGE DEFENDER MASTER	2	Round	Black

See accessories on page 48.



UNIVERSAL SECURITY

50 - 63

- 51-53 SECURITY CHAINS & LOCKS
- 54-55 STEEL BRAIDED CABLES & LOCKS
- 56-59 PADLOCKS
- 60-61 GROUND ANCHORS
- 62-63 LOAD RESTRAINT STRAPS



Chains & Cables
- see pages 51-55



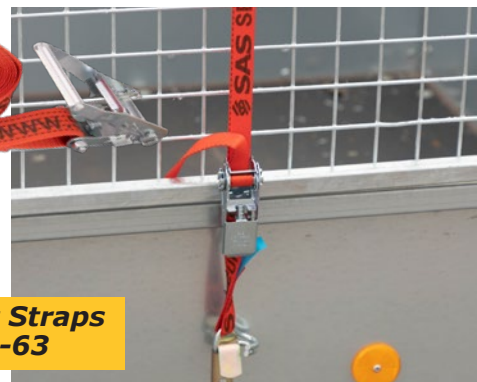
See pages 56-59



ScrewIn Ground Anchor
- see page 61

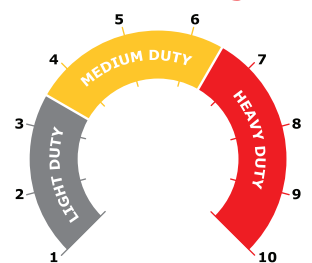


Load Restraint Straps
- see pages 62-63



There are many different applications, some requiring higher security whilst other applications need a lighter duty approach, to save weight or cost. We have rated the products in this section, to enable a quick comparison, but this is a guide only.

Secure Rating



HEAVY-DUTY D-SHACKLE SECURITY CHAIN

8162043

8161543



The D-Shackle chain is a secure mid-range chain which is light enough to be easily carried, but still extremely secure to deter would-be thieves. The chain is ideal for securing your trailer, caravan, motorbike, or machinery to a ground anchor, when stored overnight, short-term, or long term.

The hardened steel D-Shackle design gives the chain ample room to be locked with a heavy-duty padlock. We recommend using this D-Shackle chain with a SAS Ground Anchor to increase the security by locking down your equipment.

- 10mm D-Shackle chain links made from high grade steel
- Case hardened chain resists bolt croppers
- HD43 Tough durable double-locking padlock with hardened 12.7mm steel shackle
- Supplied complete with 3 keys
- Zinc-plated chain to prevent corrosion
- Non scratch heavy-duty woven cloth-covered chain sleeve

Product Code	Model	Secure Rating
8161543	HEAVY-DUTY D-SHACKLE CHAIN 1500x10mm & HD43 Padlock	7
8162043	HEAVY-DUTY D-SHACKLE CHAIN 2000x10mm & HD43 Padlock	7
8161500	HEAVY-DUTY D-SHACKLE CHAIN 1500x10mm only	-
8162000	HEAVY-DUTY D-SHACKLE CHAIN 2000x10mm only	-

For more information on padlocks, including dimensions see page 57



WHEEL

TOWING HITCH

CARAVAN

VEHICLE

PROPERTY

UNIVERSAL

ACCESSORIES

NOTES

SECURITY CHAIN

811 NEMESIS



This 16mm round link chain, made from hardened Cro-Mo steel reinforced with titanium alloy, offers incredible strength.

- Case hardened chain resist bolt croppers
- Long chain links reduce weight and increase portability
- Sold Secure Motorcycle Gold approved if used with NEMESIS 8301651 Padlock

814 Hardcore



These square link chains offer a tough solution with their double locking padlock and closed shackle design preventing cutting tool access.

- 13mm Square chain links made from Cro-Mo steel with special alloys to improve strength and hardening
- Extra long chain end links allows one end to pass through another further protecting the lock shackle
- Double locking padlock with 11mm hardened steel closed shackle design
- Supplied complete with 3 keys
- Sold Secure Motorcycle Gold approved

Product Code	Model	Secure Rating
8111500	NEMESIS 1500x16mm chain only	9
8112000	NEMESIS 2000x16mm chain only	9
8141547	HARDCORE 1500x13mm Square Chain & Padlock	8
8142047	HARDCORE 2000x13mm Square Chain & Padlock	8



ROUND SHACKLE SECURITY CHAIN

8171517



This 8mm round link chain offers an excellent combination of strength and convenience, light enough to handle but still incredibly strong and secure to give you reassurance.

- 8mm hardened steel chain
- Protective cloth chain cover
- Supplied with UB60 60mm brass padlock and 3 keys

8171575



This 8mm round link chain offers an excellent combination of strength and convenience, light enough to handle but still incredibly strong and secure to give you reassurance.

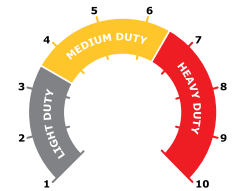
- 8mm hardened steel chain
- Protective cloth chain cover
- Supplied with a tough C-TYPE padlock and 5 keys

8181015



This 6mm round link chain offers the convenience of a light-weight chain to protect against the opportunist thief.

- 6mm hardened steel chain
- Protective cloth chain cover
- Supplied with UB50 50mm brass padlock and 3 keys



Product Code	Model	Secure Rating
8171575	MULTI-PURPOSE CHAIN 1500x8mm with C-TYPE Padlock	5
8171517	MULTI-PURPOSE CHAIN 1500x8mm with UB60 Padlock	4
8171500	MULTI-PURPOSE CHAIN 1500x8mm only	-
8181015	MULTI-PURPOSE CHAIN 1000x6mm with UB50 Padlock	3

For more information on padlocks, including dimensions see page 56 & 59

For ground anchors
- see pages 60-61



WHEEL

TOWING HITCH

CARAVAN

VEHICLE

PROPERTY

UNIVERSAL

ACCESSORIES

NOTES

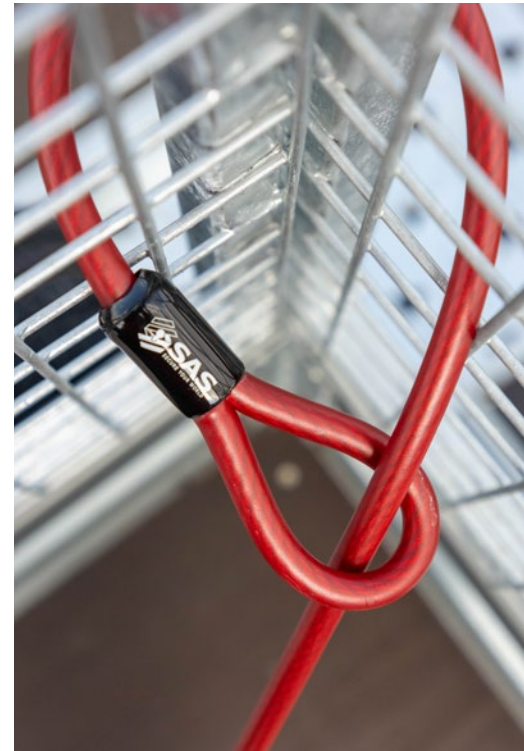
SECURITY STEEL BRAIDED CABLES

8221890 COMBI LOCK



A cost effective, lightweight and easy to use security cable.

- 1800x12mm high-tensile steel self-coiling cable
- Vinyl coated to protect paintwork
- Re-settable 4-digit combination
- Built-in LED light
- No keys to lose!



LED light enables easy use in the dark



Lasso one end of the steel braided cable around a post, trailer frame or ground anchor to effectively double the useful length.



Strong flexible braided security cables are great for locking up equipment. Just thread through and use a padlock through the loop ends to secure. If you need longer you can simply join cables either using a padlock or by a lasso method.

824 LOOP CABLE



- 12mm high-tensile steel braided cable
- Vinyl coated to protect your paintwork
- 2 lengths available 2500 & 6000mm

824 LOOP CABLE & LOCK

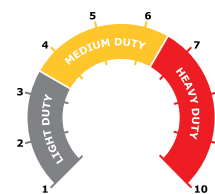


- Includes a HD43 heavy-duty mini shackle padlock, with 3 keys
- 2500 mm x 12mm high-tensile steel braided cable
- Vinyl coated to protect your paintwork

Product Code	Model	Secure Rating
8242500	LOOP CABLE 2500x12mm Steel Braided Security Cable	5
8242543	LOOP CABLE 2500x12mm Steel Braided Security Cable with HD43 Padlock	5
8246000	LOOP CABLE 6000x12mm Steel Braided Security Cable	5
8221890	COMBI 1800x12mm Steel Braided Security Cable with Combination Lock	4

For more information on HD43 padlock, including dimensions see page 57

Lasso method of joining cables



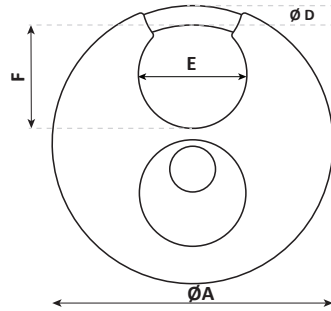
PADLOCKS

DC70 DISC PADLOCK



Heavy-duty stainless steel disc padlock.

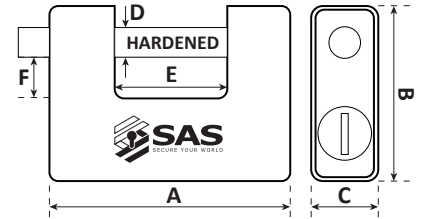
- Made from stainless steel
- 9.5mm steel shackle
- 3 keys supplied



8300075 C-TYPE PADLOCK



- Robust solid steel body
- Tough lock for a variety of purposes
- Supplied with 5 keys, anti-pick design
- Applications include container door lock, good for use with security chains or cables
- Also used in ULTIMATE Garage Defender
- Also available Keyed Alike

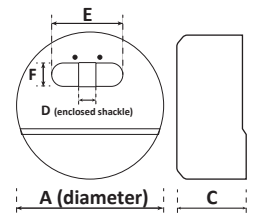
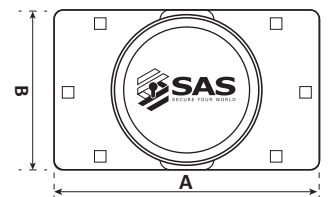


HASP & PADLOCK

8500071 VAN/SHED DOUBLE DOOR LOCKING SYSTEM



- Ideal for securing rear side hinged van doors or for any side hinged application.
- Includes 73mm enclosed shackle padlock and shrouded heavy duty hasp (fixing bolts not supplied)
- Fully hardened steel body
- Padlock also available separately
- Supplied with 2 keys

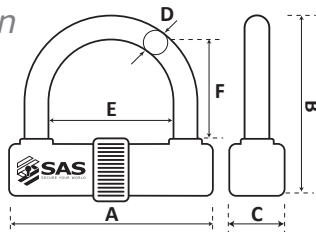


8300043 HD43 LOCK



A tough mini shackle padlock that is ideal for use with SAS chains or cables.

- Made from tough hardened steel
- Double locking 12.7mm case hardened steel shackle
- Twisting key way dust cover
- Anti-pick key design
- 3 keys supplied
- Also available Keyed Alike

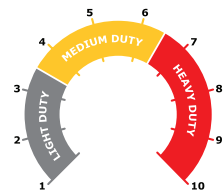
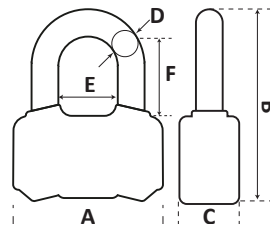


8301651 NEMESIS



Ultra-strong padlock, ideal for use with the Nemesis chain for the ultimate security solution.

- High security, independently approved padlock
- Sold Secure Gold approved as disc lock for motorcycles
- Double-locking, anti-pick lock mechanism with a 16mm hardened steel shackle
- Supplied complete with 3 keys
- Dust cover to protect the lock barrel from dirt ingress



Product Code	Model	A	B	C	D	E	F	Secure Rating
8300033	DC70 Disc Padlock, Stainless Steel	68	-	-	9.5	19	16	7
8300075	C-TYPE Solid Steel Padlock	94	70	29	13	40	17	7
8300076	C-TYPE Solid Steel Padlock - Keyed Alike							
8500071	VAN/SHED Double Door Lock & Padlock	208	115	-				7
8500000	VAN/SHED Double Door Hasp only							
8300071	ROUND Solid Steel Secure Padlock only	73	-	37	10	45	15	7
8300043	HD43 LOCK 12.7mm D Padlock	99	97	35.2	15.4	47	46	6
8300044	HD43 LOCK 12.7mm D Padlock, Keyed Alike							
8301651	NEMESIS 16mm D Padlock	95	122	39	18	39	52	9

Dimensions shown are an approximate maximum (mm) - shackle diameter includes a rubber covering if fitted.

UNIVERSAL SECURITY

KB21 UNILOCK

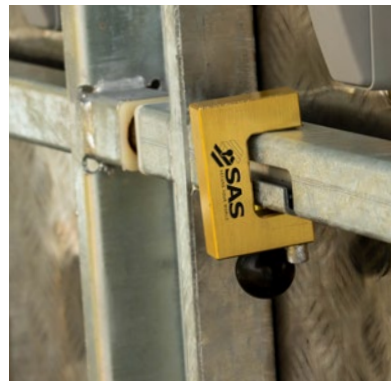
Special purpose shackle lock suitable for many applications. It benefits from a large opening, but with unusually small shackle diameter often making it fit where others cannot.



- Solid brass lock body, giving great durability
- Enclosed hardened chrome plated steel shackle, for increased strength
- High precision 6 pin brass lock and cylinder core, for a smooth operation
- Supplied with 3 nickel plated brass keys
- Also available keyed alike



Blue Line box trailer rear shutter door or ramp catches

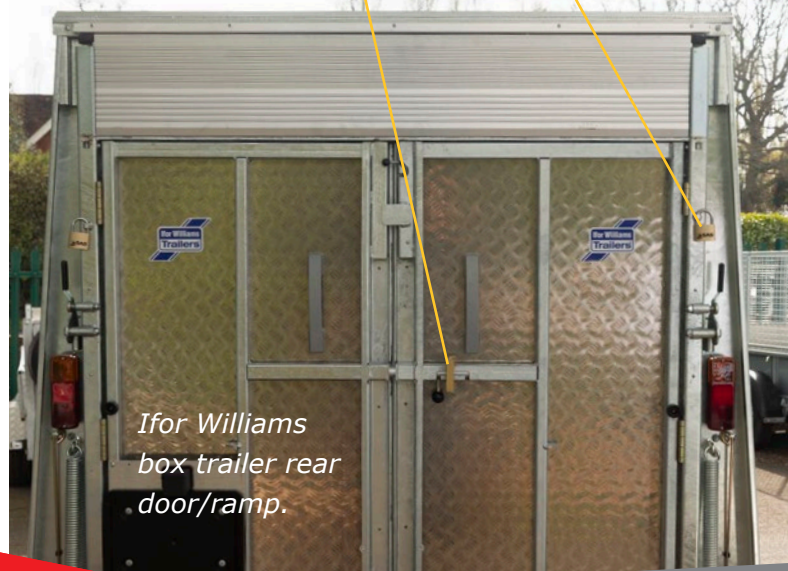


KB21 UNILOCK



50MM PADLOCK

KB21 UNILOCK is also designed to fit a Knott pressed steel trailer hitch, with a curved handle and hole right through - see page 34



Ifor Williams box trailer rear door/ramp.

UNIVERSAL BRASS PADLOCK

A great range of general-purpose padlocks with a solid brass body, making them very versatile for use in a wide range of environments and applications.

The shackle is heat-treated hardened steel, with a secure double locking mechanism. The padlock also has a high precision lock mechanism with a brass cylinder core and 5 brass key-way pins, this is coupled with stainless steel springs giving the padlock higher security, good durability, and resistance, with a smooth operation.

UB40 PADLOCK



- 40mm Brass Padlock
- Tough hardened steel shackle
- Supplied in packs of two with 6 keys, that will operate both padlocks

UB50 PADLOCK



- 50mm Brass Padlock
- Tough hardened steel shackle
- Supplied in packs of two with 6 keys, that will operate both padlocks

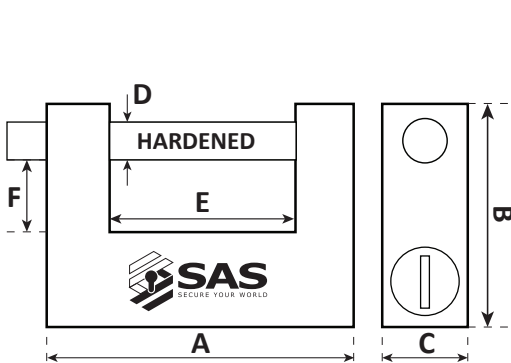
UB60 PADLOCK



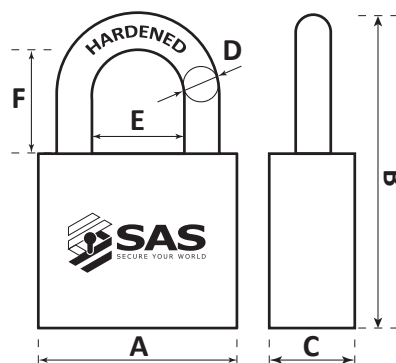
- 60mm Brass Padlock
- Tough hardened steel shackle
- Supplied in packs of two with 6 keys, that will operate both padlocks

Product Code	Model	A	B	C	D	E	F	Secure Rating
8300021	KB21 UNILOCK	80	55	18	7	42	19.9	4
8300022	KB21 UNILOCK, Keyed Alike							
8340213	UB40 PADLOCK, 40mm brass body, Pk 2	40	62.2	13.8	6.2	21.6	23	3
8350215	UB50 PADLOCK, 50mm brass body, Pk 2	50	76	16	8	28	28	4
8360217	UB60 PADLOCK, 60mm brass body, Pk 2	60	89	18.5	10	32	36	5

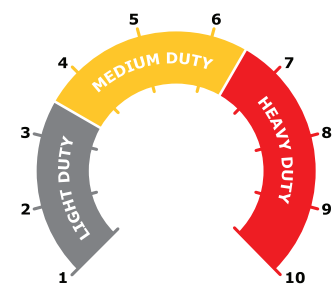
Dimensions shown are an approximate maximum (mm)



KB21 UNILOCK



UB PADLOCKS



DOCKING STATIONS AND GROUND ANCHORS

The SAS Secure Anchor range offers a simple but effective way to secure your equipment, when used with a security chain or cable coupled with a padlock. Simply bolt to a wall or concrete drive for an effective anchor point.

SECURE ANCHOR



- Double wall thickness secure anchor for the more demanding applications
- Can be fitted to concrete floors, driveways or concrete/brick walls
- Easy to fit with fitting instructions included
- Fixing kit supplied; 2 x high security expansion bolts, 2 x steel plugs and 2 x anti-tamper ball-bearings
- The strength of the installation is dependent on the quality of the floor/wall material
- Great for use with the SAS HEAVY-DUTY D-SHACKLE CHAINS – see page 51

SECURE ANCHOR MINI



- Robust secure anchor
- Can be fitted to concrete floors, driveways or concrete/brick walls
- Easy to fit - Fitting instructions included
- Fixing kit supplied; 2 x high security expansion bolts, 2 x steel plugs and 2 x anti-tamper ball-bearings
- The strength of the installation is dependent on the quality of the floor/wall material
- Great for use with the SAS MULTI-PURPOSE CHAINS - see page 53 or with the security steel braided cables - see page 54

HEAVY-DUTY DOCKING STATION



- Combines the rigidity of an anchor with the flexibility of a chain
- Made entirely from forged hardened steel
- Fits chains up to 16mm in width
- Weather resistant dust cap
- All necessary high security fittings included
- Can be wall or floor mounted
- Heavy duty: 4.5kg in weight
- Thatcham approved

ROTAFORCE ROTATING GROUND ANCHOR

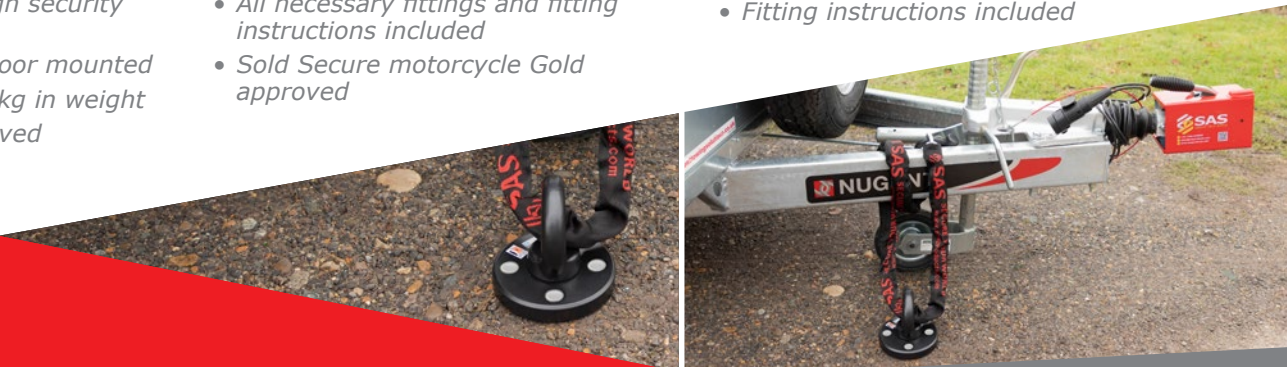


- Bolts down with 4 security bolts
- Unique rotating head allows easier fitment and easier positioning
- 26mm diameter case hardened steel head resists all forms of attack
- 59mm internal diameter allows chains or cables to be attached
- All necessary fittings and fitting instructions included
- Sold Secure motorcycle Gold approved

TERRAFORCE GROUND ANCHOR



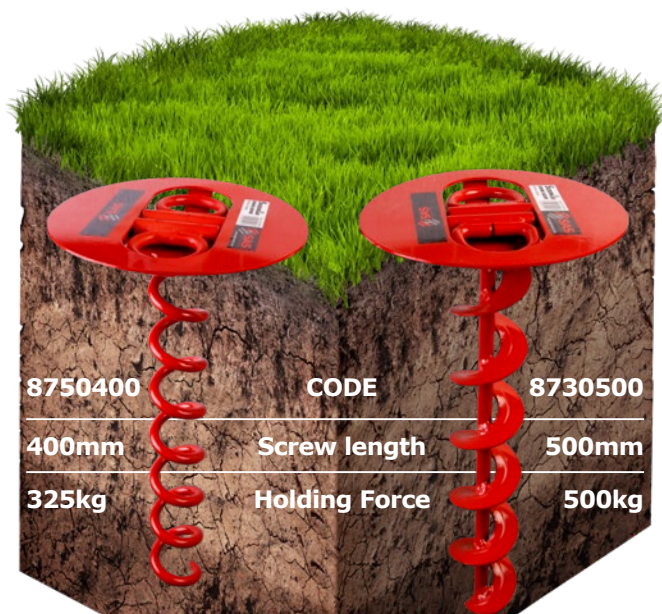
- Case hardened concrete-in steel anchor
- Simple and easy to fit
- 21mm diameter case hardened steel head resists all forms of attack
- 59mm internal diameter allows chains or cables to be attached
- Sold Secure motorcycle Gold approved
- Fitting instructions included



SCREWIN GROUND ANCHOR

A heavy-duty ground anchor, simply screw into the ground and gain a great anchoring point to lock your trailer, caravan, motor bike, quad bike, aircraft and more, using a padlock with chain or cable. When finished, unscrew and remove to use another day in another place.

- Portable for extra adaptability
- Extremely strong and easy to use
- Screw in and out again to move on to a new location
- 50mm hardened double shackle loops for easy connection
- Heavy-duty permanent or semi-permanent security anchor to secure any portable valuable item
- Red powder coated paint finish
- Supplied with winding in bar



Product Code	Model	Secure Rating
8675000	SECURE ANCHOR, bolt down ground anchor	6
8685000	SECURE ANCHOR MINI, bolt down ground anchor	4
8611000	HEAVY-DUTY DOCKING STATION, bolt down	9
8631000	ROTAFORCE Rotating Ground Anchor, bolt down	8
8655000	TERRAFORCE Ground Anchor, concrete-in	8
8730500	SCREWIN50 Ground Anchor	2
8750400	SCREWIN40 Ground Anchor	2



WHEEL

TOWING HITCH

CARAVAN

VEHICLE

PROPERTY

UNIVERSAL

ACCESSORIES

NOTES

LOAD RESTRAINT STRAPS

A range of high-quality load restraint straps, both ratchet and cam buckle style. Used by many to secure equipment or materials on a truck or trailer, but useful for many other purposes.

RS3-5 MINI RATCHET STRAP



8831502

- Set of 2 ratchet straps
- Non-locking ratchet buckle
- Complies with EN12195-2
- 25mm strap width
- 5m overall length
- Welded claw hooks

CB1-4 CAM BUCKLE STRAP



8814402

- Set of 2 Light-duty straps
- Pull tight cam buckle
- Complies with EN12195-2
- 25mm strap width
- 4m overall length
- Endless strap type

STRAP ACCESSORIES

WEAR SLEEVES

- 300mm overall length
- 60mm sleeve for use with RS5
50mm HD straps
- Set of 4

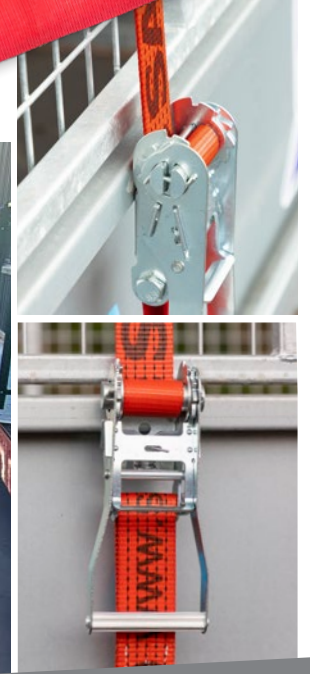
8896304



HD WHEEL CHOKERS

- Set of 4, Soft eye chokers, secures wheels
without scratching or scuffing alloys
- Fully tested to EN1492-2
- 470mm overall length
- Wear sleeves included

8894704



RS5-4 HD RATCHET STRAP



**4m length
8855400**

- Heavy-duty ratchet strap
- Non-locking ratchet buckle
- Complies with EN12195-2
- 50mm strap width
- Welded claw hooks

RS5-6 HD RATCHET STRAP



**6m length
8855600**

- Heavy-duty ratchet strap
- Non-locking ratchet buckle
- Complies with EN12195-2
- 50mm strap width
- Welded claw hooks

VEHICLE STRAP DOWN KIT

Strap down a vehicle on a car transporter trailer or truck using this handy kit, made using the high-quality straps from the SAS range.

- **KIT INCLUDES: -**
- 4x RS5-4 HD Ratchet Straps
- 4x Wheel Chokers with wear sleeves



Product Code	Description	Strap Rating	Breaking Strain	Strap Width	Strap Length
8814402	CB1-4 Cam Buckle Strap, endless, Set of 2	400 daN	800kg	25mm	4m
8831502	RS3-5 Mini Ratchet Strap, claw hooks, Set of 2	450 daN	900kg	25mm	5m
8855400	RS5-4 Heavy Duty Ratchet Strap, claw hooks	2500 daN	5000kg	50mm	4m
8855600	RS5-6 Heavy Duty Ratchet Strap, claw hooks	2500 daN	5000kg	50mm	6m
8855444	VEHICLE STRAP DOWN KIT, 4 Straps & Chokers	2500 daN	5000kg	50mm	4m
8894704	WHEEL CHOKER with Wear Sleeve, Set of 4	1000kg	7000kg	45mm	470mm
8896304	WEAR SLEEVE for RS5 Ratchet Strap, Set of 4	-	-	60mm	300mm

More sizes are available on request, subject to minimum order requirements – please notify us of your requirements.

(Not suitable for lifting purposes)

WHEEL

TOWING HITCH

CARAVAN

VEHICLE

PROPERTY

UNIVERSAL

ACCESSORIES

NOTES

ACCESSORIES & SPARE PARTS

64 - 66

- 64 LUBRICANTS
- 65 REPLACEMENT LOCKS
- 66 PARTS & ACCESSORIES



Spares and accessories to keep your SAS products in top condition and ready for operation.

CARE PRODUCTS

9980001 GENERAL PURPOSE GREASE



Corrosion block waterproof grease out performs lithium and most synthetic greases – Ideal for lubricating wheelclamps.

- *Waterproof*
- *Multi grease compatible*
- *Excellent thermal / oxidative stability*

9980006 GENERAL PROTECTANT SPRAY



A highly effective, general purpose protectant with strong film forming properties, which create a protective coating to prevent moisture ingress and damage on all types of components. Particularly suitable for overwintering and long-term storage to help maintain condition of all components, including moving parts, metal fasteners, rubber seals and electronics.

- *Mint Protectant is ideal for repelling moisture*
- *Enhances protection against dirt and grime*
- *Light wax coating ensures longevity of protection*

Great For:

- *Lubricating locks*
- *Over winter protection of components/ equipment*

9980050 THREAD LOCK



Medium strength thread lock for use on bolt threads to protect against shaking loose. Allows for disassembly if required.

Product Code	Description
9980001	GENERAL PURPOSE CB Grease & Lubricant, 2oz
9980006	GENERAL PROTECTANT Aerosol Spray, 500ml
9980050	THREAD LOCK

ACCESSORIES & SPARE PARTS

REPLACEMENT LOCKS

A selection of replacement locks for our products.

Fitted to	Picture	Product Code	Model
HD SERIES WHEELCLAMPS SUPACLAMP DUO WHEELCLAMPS TRAILER CLAMP WHEELCLAMP (Oval style lock)		9000112	Lock with 2 Keys
		9000113	Lock with 3 Keys
		9000114	Lock with 4 Keys
		9000115	Lock with 5 Keys
		9000116	Lock with 6 Keys
		9000212	Lock with 2 Keys - Keyed Alike
		9000201	Extra Keys - Keyed Alike only
NEW DEFENDER WHEELCLAMPS (Round Style Lock)		9007313	Lock with 3 keys
		9007413	Lock with 3 Keys - Keyed Alike
		9002601	Extra Keys - Keyed Alike only
NEW DEFENDER WHEELCLAMPS (Older Oval style lock)		9001112	Lock with 2 keys - Oval style lock
SUPACLAMP DUO GOLD WHEELCLAMP (round)		9007113	Lock with 3 Keys
		9007213	Lock with 3 keys - Keyed Alike
		9002601	Extra Keys - Keyed Alike only
SUPACLAMP DUO SILVER WHEELCLAMP EYELOCKS (Round Style Lock)		9002113	Lock with 3 Keys
		9002613	Lock with 2 keys - Keyed Alike
		9002601	Extra Keys - Keyed Alike only
FORT HITCHLOCKS (excluding FORT 2 GOLD)		9006113	Lock with 3 keys
		9006213	Lock with 3 keys - Keyed Alike
		9006201	Extra Keys - Keyed Alike only
FORT 2 GOLD HITCHLOCK (Round Style Lock)		9003113	Lock with 3 Keys
		9003213	Lock with 3 Keys - Keyed Alike
		9002601	Extra Keys - Keyed Alike only
ORIGINAL HL1, HL2 & HL3 HITCHLOCKS		9005112	Lock with 2 keys
		9005212	Lock with 2 keys - Keyed Alike
		9005201	Extra Keys - Keyed Alike only
HEAVY-DUTY LEG LOCKS		9004112	Lock with 2 keys
		9004212	Lock with 2 keys - Keyed Alike
TRAILER DOOR LOCK		9008113	Lock, push in with 3 keys
		9008213	Lock, push in with 3 keys - Keyed Alike
HEAVY DUTY SECURITY POSTS (round)		9007513	Lock with 3 keys
		9007613	Lock with 3 keys, Keyed Alike
		9002601	Extra Keys -Keyed Alike Only

Extra keys are available on some products at time of ordering a product or replacement lock, but we cannot guarantee to be able to offer replacement keys to specific numbers after initial order.

WHEEL

TOWING HITCH

CARAVAN

VEHICLE

PROPERTY

UNIVERSAL

ACCESSORIES

NOTES

ACCESSORIES & SPARE PARTS

HITCH ACCESSORIES

F0



F2



F3



F4



	Product Code	Model	Keys Supplied
F0	9003313	SAS Ultimate Barrel Lock for Bradley Auto & Doublelock Hitch heads	3
	9003413	SAS Ultimate Barrel Lock for Bradley Auto & Doublelock Hitch heads - Keyed Alike	3
F2	9004712	Replacement Barrel Lock for AL-KO AK301 & AK351 Hitch heads	3
F3	9005712	Replacement Barrel Lock for Knott Avonride Hitch heads	2
F4	9220021	Black ABS Towball	

WHEELCLAMP ACCESSORIES & PARTS

L



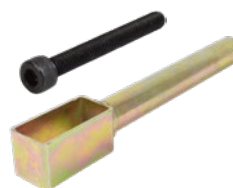
M



N



O



P



X1



X2



X3



	Product Code	Model
L	9900011	Case Only in Red, suitable for HD1, Supaclamp & Trailer Clamp (Specify product label when ordering)
M	9900031	SAS Trailer Clamp, smaller Allen Key
	9900034	SAS Wheel Clamp, Allen Key, bent
N	9900035	SAS Wheel Clamp, Allen Key, straight
O	9120053	Pin & Bolt set for HD1
P	9150021	Refurb Kit for HD1 - Lock & 2 keys, Allen Key, Pin & Bolt
X1	9120050	Extension Tube, straight 1" (25mm) suitable for HD1 & HD2
X2	9120063	Extension Tube, straight 1.5" (37mm) suitable for HD1 & HD2
X3	9120075	Extension Tube, straight 2" (50mm) suitable for HD1 & HD2

Other parts and accessories available on request – please ask.



SAS SECURITY PRODUCTS LTD
Sussex, England

+44 1444 675889

+44 1444 675889

sales@sasproducts.com

www.sasproducts.com

Company Registration No: 2701887
VAT Registration No: 729 1709 19



YOUR LOCAL SAS DEALER IS:

